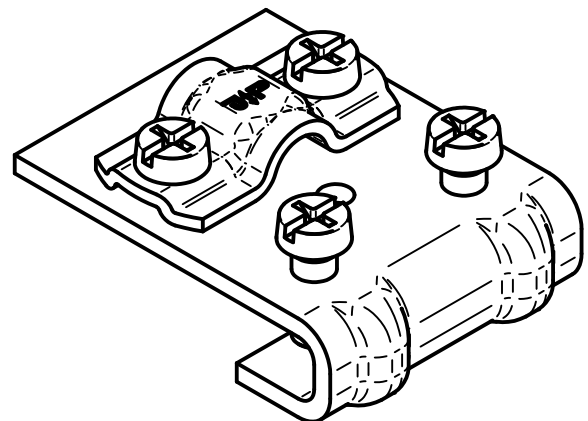
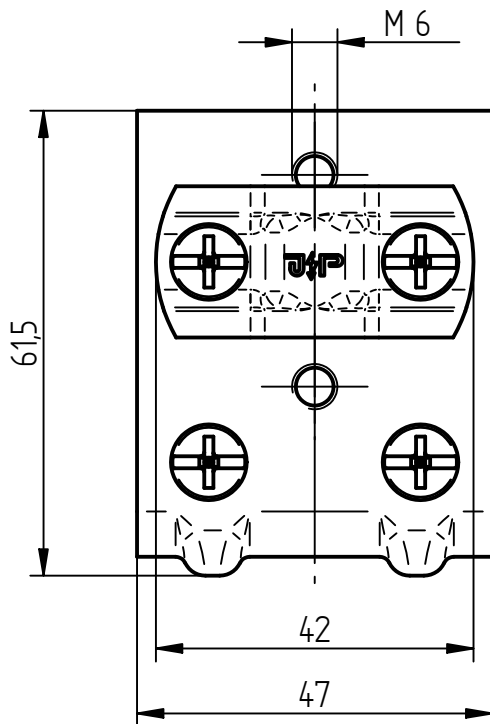
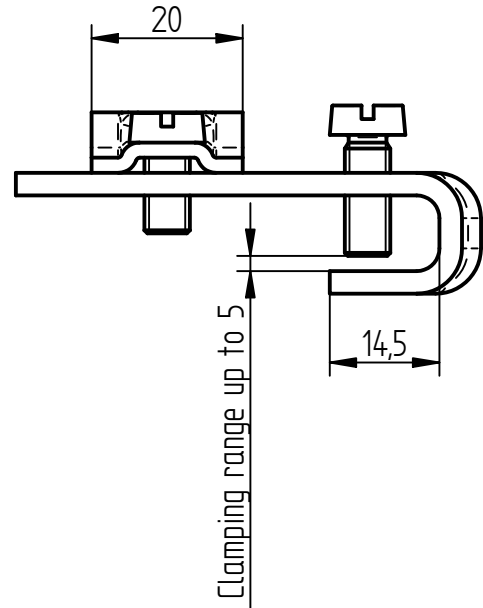
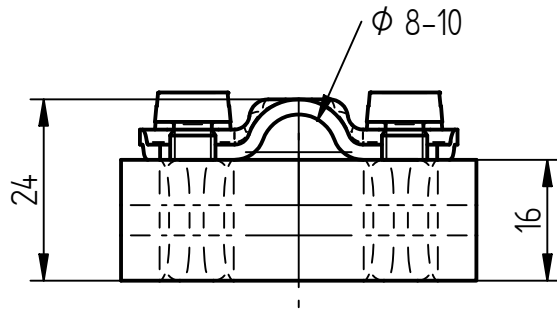


Product Specification

Ord.-No.: **1263**

Specification: Saddle clamp, Alu, Ø 8-10 mm
clamping range up to 5 mm

Performance: Saddle clamp according to DIN EN 62561-1 with fastener for secure connection to sheet and steel constructions.
Conductor leading lengthwise and crosswise.



Material	Aluminium
Clamping range	up to 5 mm
Fit	Ø 8-10 mm
Screw	[4x] Cylinder head screw M6, stainless steel V2A
Weight	52 g
Standard reference	DIN EN 62561-1
Packing unit	50 units